



New 6 Series Fisheye Camera

One fisheye camera for 360° coverage

魚眼補正



Fisheye view



360 panorama + 3PTZ



4PTZ



AR hemisphere



180 panorama view



360 panorama + 6PTZ



4PTZ



Cylinder



360 panorama view



360 panorama + 8PTZ



Fisheye + 8PTZ



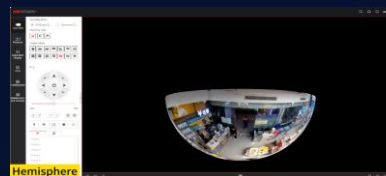
180 panoramic view



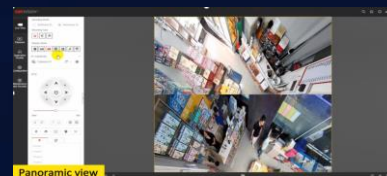
360 panorama + PTZ



2PTZ



Hemisphere



Panoramic view



Fisheye view



180 dual-channel panorama



4 PTZ Fusion



Fisheye + 3 PTZ

ヒートマップ

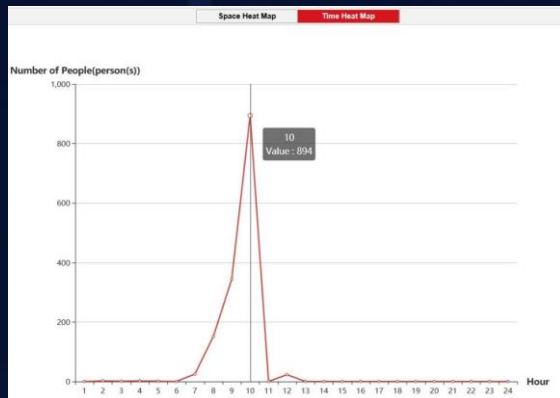
より人が多い場所を価格表示し、人が少ない場所を青く表示する。
店舗の人気コーナーと不人気コーナーを分析することができる。

Single-area Heat Map



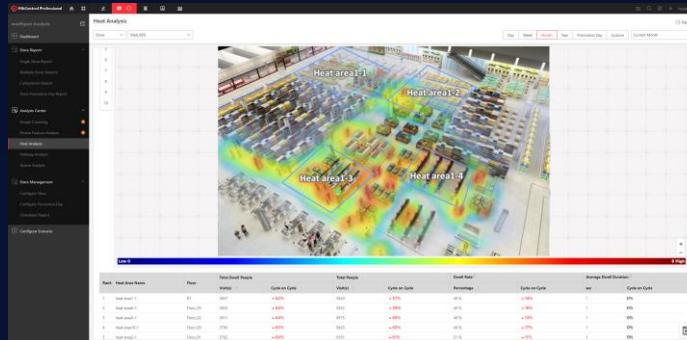
High attention area

Low attention area



Heat Map report on camera web

Multi-area Heat Map Integration



* Multi-area heat map intergration in HikCentral platform



Identifies the most attractive shelves and displays



Provides information for operating statistics



Helps store owners make more informed decisions

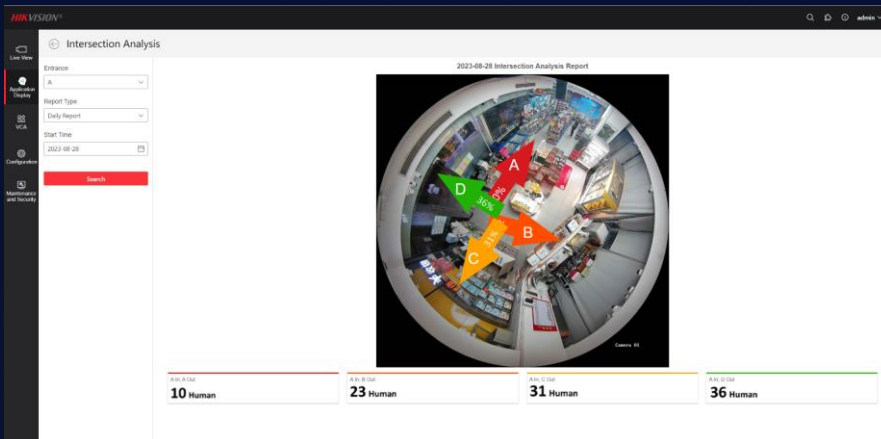
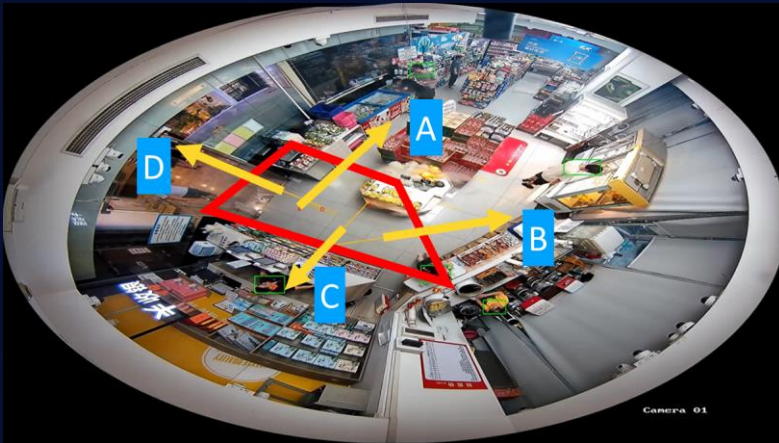
Recommended Scenarios

Supermarket, chain store, and other commercial scenarios
(Installation Height: 2.5 to 4.5m)



交差分析（または交差点分析）

どちらの方向に移動しているのか（A方向・B方向・C方向・D方向）分析することができる。



行列検知

Improved customer experience

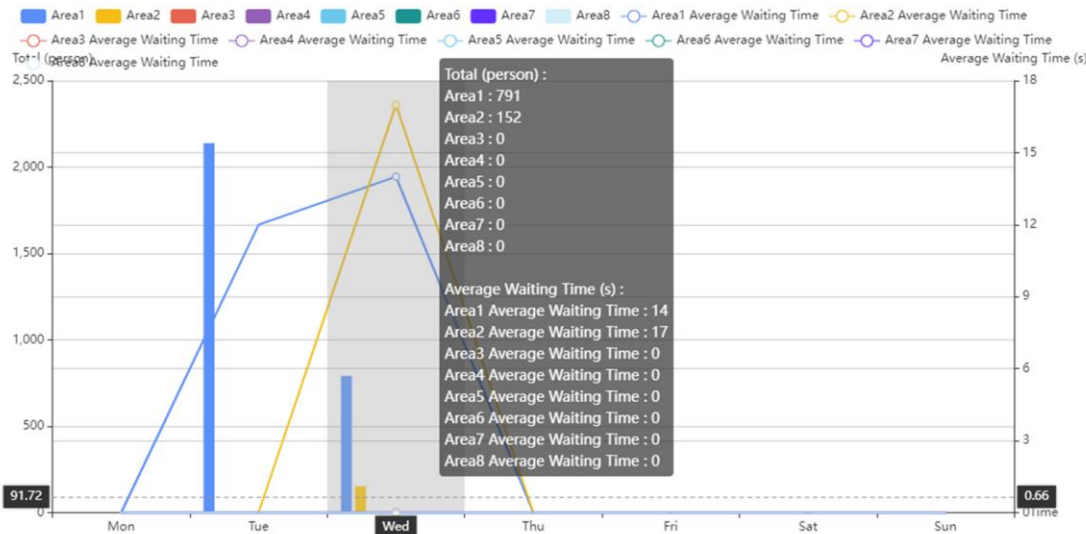


Queue Management:

Using advanced video analytics and intelligent algorithms to monitor and manage queues in various settings, such as retail stores, banks, airports, and government offices.



Queuing-Up Time Analysis



Reports data for business optimization

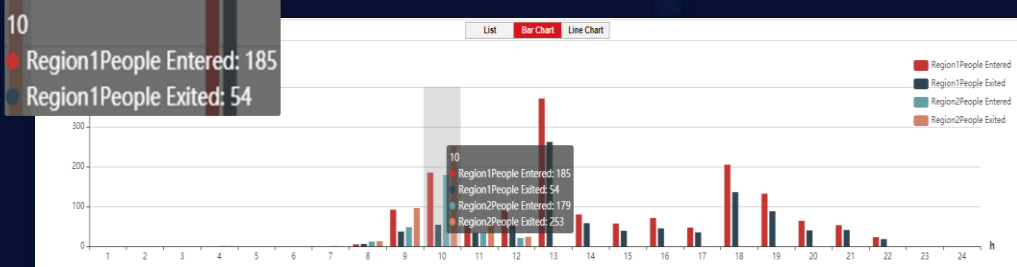
- The number of people in line
- The waiting time of each person in line

Support 2 detection modes

- **Regional people queuing-up counting :**
When the people number in the set area reaches alarm threshold and triggering condition, an alarm will be triggered.
- **Waiting time detection**
When the waiting time of the people in the set area meet the alarm triggering condition and is longer than the threshold, an alarm will be triggered.

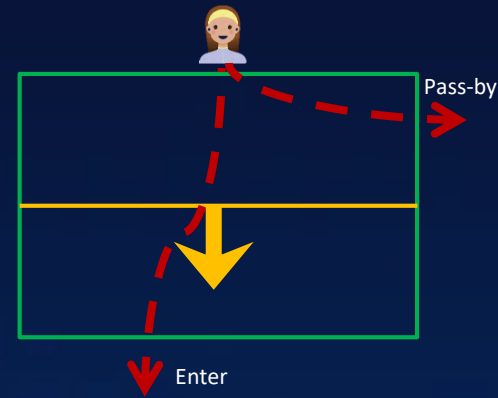
人数カウント

ラインクロス式の数人数カウント



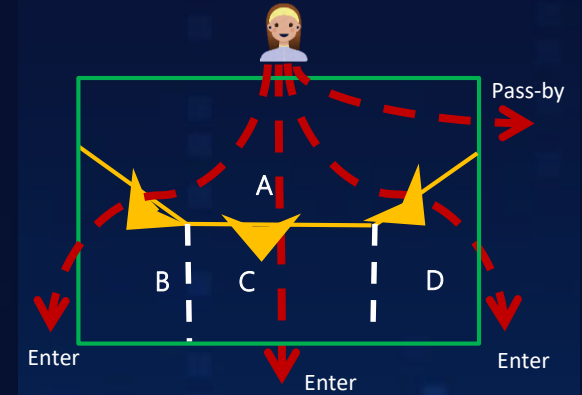
Enter: 49
Leave: 44
Region1

Line Crossing Rule Straight Line



- ✓ Counts persons **entering / leaving** an area
- ✓ Counts persons **passing by** an area

Line Crossing Rule Multiple lines



- ✓ Counts persons **entering / leaving** an area
- ✓ Counts persons **passing by** an area

➤ Get precise dynamic passenger flow data (Enter, leave, passby)

➤ Help marking **actionable decisions** based on reports (daily/weekly/monthly)

* One camera supports **3 detection regions**