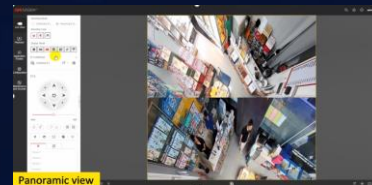
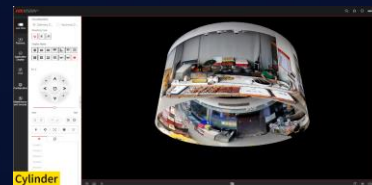
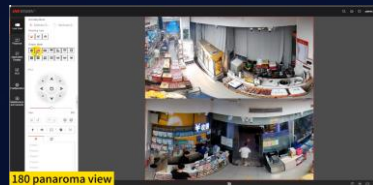




New 6 Series Fisheye Camera

One fisheye camera for 360° coverage

魚眼補正



ヒートマップ

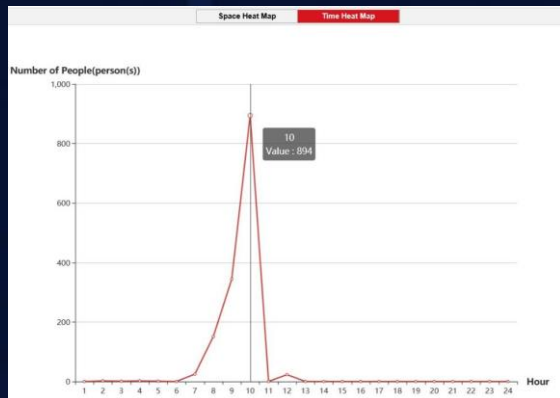
より人が多い場所を赤く表示し、人が少ない場所を青く表示する。
店舗の人気コーナーと不人気コーナーを分析することができる。

Single-area Heat Map



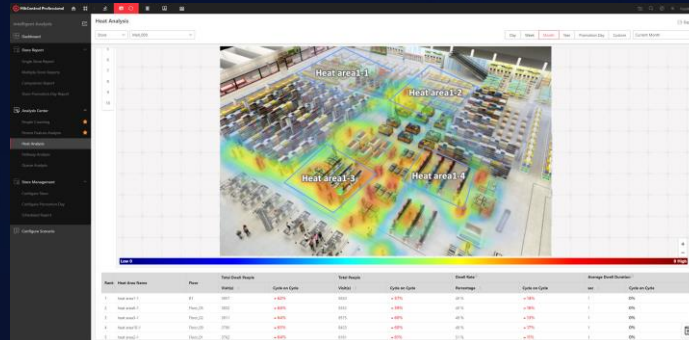
High attention area

Low attention area



Heat Map report on camera web

Multi-area Heat Map Integration



* Multi-area heat map integration in HikCentral platform



Identifies the most attractive shelves and displays



Provides information for operating statistics



Helps store owners make more informed decisions

Recommended Scenarios

Supermarket, chain store, and other commercial scenarios
(Installation Height: 2.5 to 4.5m)



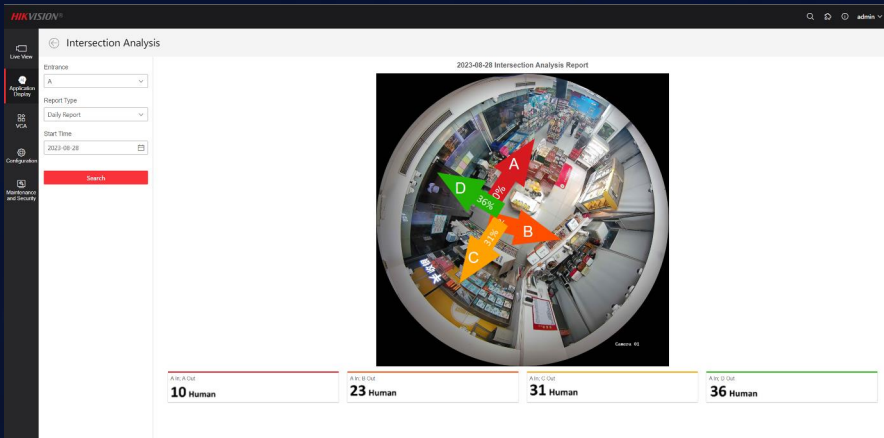
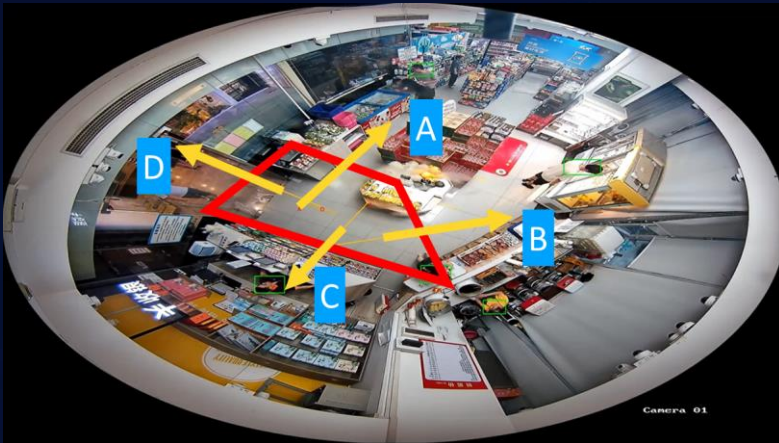
ヒートマップ

より人が多い場所を赤く表示し、人が少ない場所を青く表示する。
店舗の人気コーナーと不人気コーナーを分析することができる。



交差分析（または交差点分析）

どちらの方向に移動しているのか（A方向・B方向・C方向・D方向）分析することができる。



交差分析（または交差点分析）

どちらの方向に移動しているのか（A方向・B方向・C方向・D方向）分析することができる。



行列検知

Improved customer experience

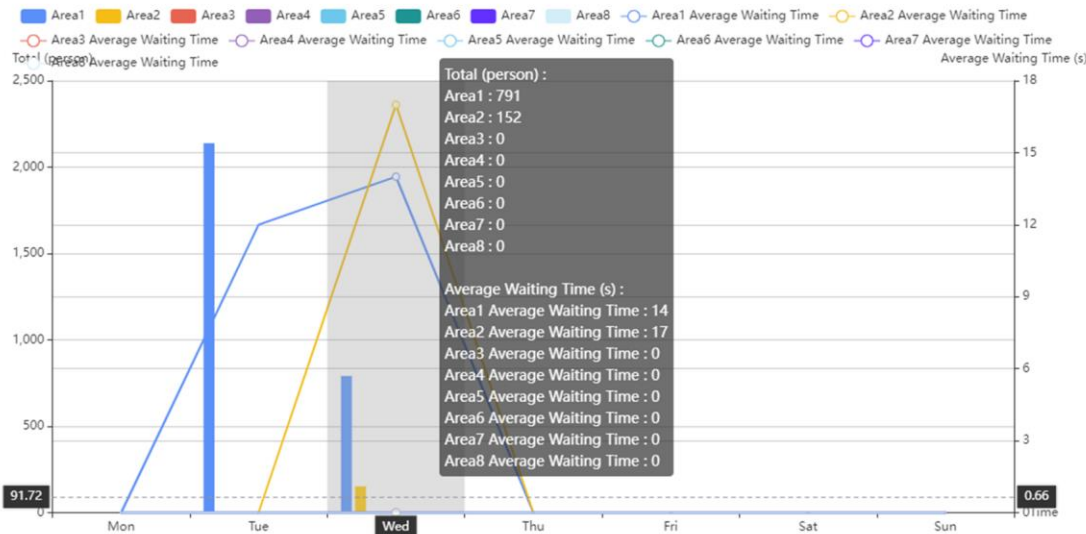


Queue Management:

Using advanced video analytics and intelligent algorithms to monitor and manage queues in various settings, such as retail stores, banks, airports, and government offices.



Queuing-Up Time Analysis



Reports data for business optimization

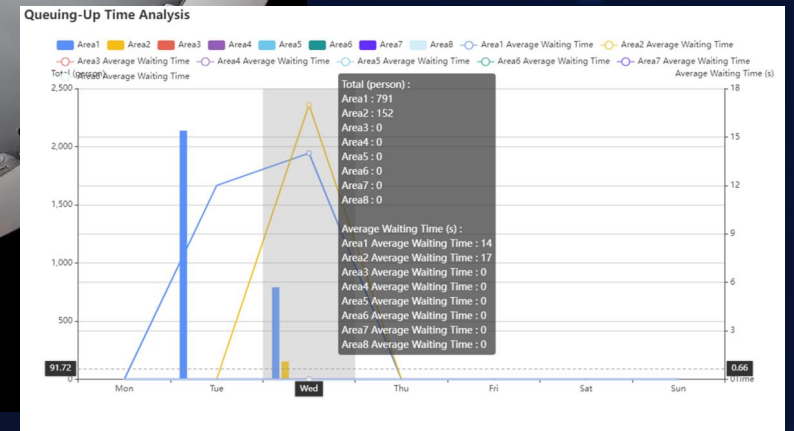
- The number of people in line
- The waiting time of each person in line

Support 2 detection modes

- **Regional people queuing-up counting :**
When the people number in the set area reaches alarm threshold and triggering condition, an alarm will be triggered.
- **Waiting time detection**
When the waiting time of the people in the set area meet the alarm triggering condition and is longer than the threshold, an alarm will be triggered.

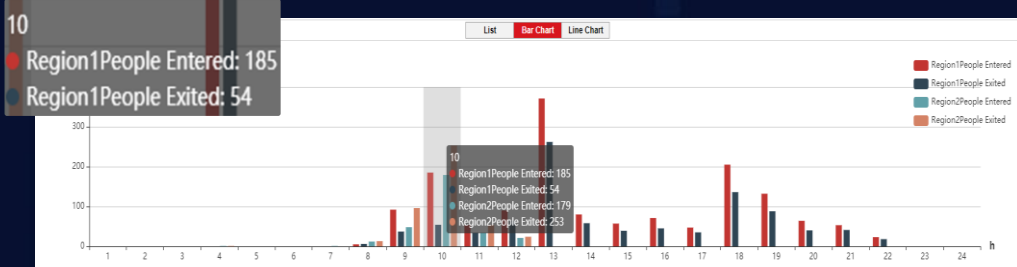
行列検知

Improved customer experience



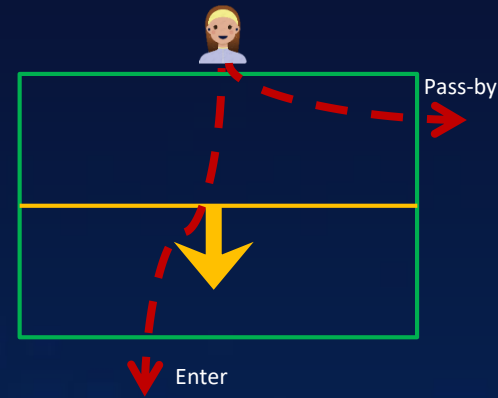
人数カウント

ラインクロス式の数人数カウント



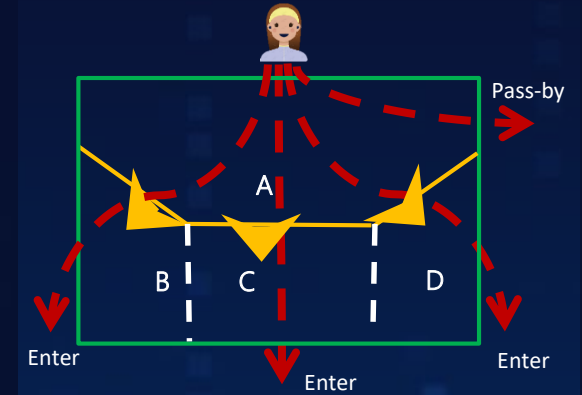
Enter: 49
Leave: 44
Region1

Line Crossing Rule Straight Line



- ✓ Counts persons entering / leaving an area
- ✓ Counts persons passing by an area

Line Crossing Rule Multiple lines



- ✓ Counts persons entering / leaving an area
- ✓ Counts persons passing by an area

➤ Get precise dynamic passenger flow data (Enter, leave, passby)

➤ Help marking actionable decisions based on reports (daily/weekly/monthly)

* One camera supports 3 detection regions

人数カウント

店舗に入店した人数をカウントすることができる。

